

Friends of Lewes: HIGH STREET QUIZ Spring 2016

Lewes High Street runs from Cliffe Bridge up to St Anne's Church, numbers running up the southern side, then crosses to the Pelham Arms and continues numbering all the way back to the river on the northern side. It includes many fine buildings, recorded in drawings, with historical notes, by John Houghton in his 1998 book, "*Look at Lewes*". Anyone who gets all these questions correct will win a free copy of this book.

Many of the houses have decorative windows above the front doors, to let light into the hallways:
Can you find which number on the High Street matches each of these photographs?

1.



2.



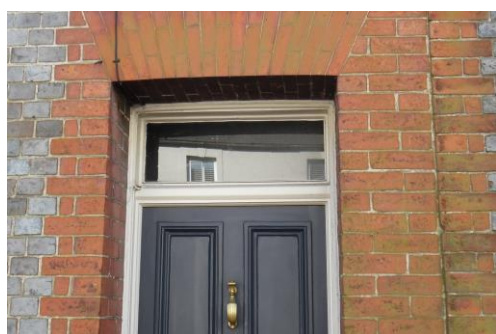
3.



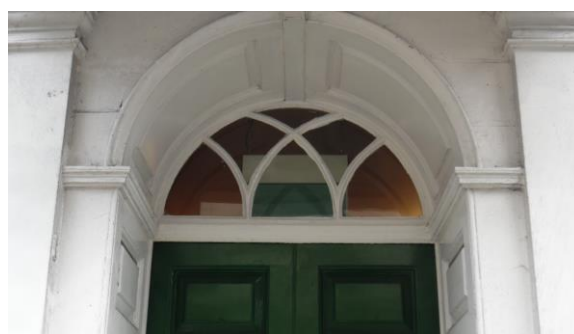
4.



5.



6.



7.



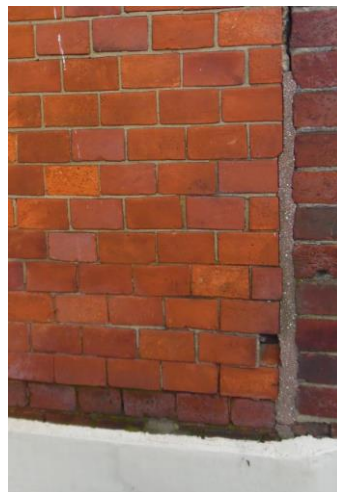
8.



9. Which building on the High Street has these flints?



10. What is unusual about the bricks on the left?



Of course, there are bits of architectural detail to be found elsewhere in the town too.
In which streets, which join on to the High Street, are the features shown here?

11.



12.



Send your answers, numbered 1-12, your name and contact details to

enquiries@friends-of-lewes.org.uk

or to MS Taylor, Friends of Lewes c/o Town Hall, High Street, Lewes, BN7 2QS by 25 April 2016

See more John Houghton photos at www.facebook.com/FriendsofLewes/