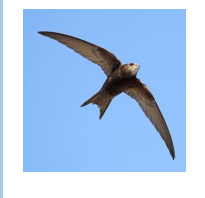


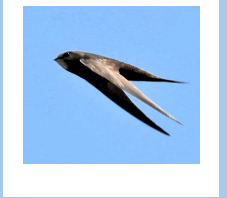
A Swift-friendly town for Nature Recovery



At Lewes Climate Hub, 32 High Street, Lewes, BN7 2LU
23rd April to 31st May 2025

Open Wednesdays to Saturdays, 11.00 a.m. to 3.00 p.m.

Organised by Lewes Swift Supporters and sponsored by Chalk Cliff Trust



Welcome back to our Swifts!

Saturday 26th April :To start off our season, meet us at the Linklater Pavilion on the Railway Land at 10.30 a.m. to join a pavement parade to Lewes Climate Hub.

Then join us for a talk by Paul Stevens “A Summer with Swifts, Swallows and Martins” from 1.30 p.m.



Special visitors every Saturday – see below. Throughout the season drop in to the Hub to find out how you may help to keep Lewes as a Swift-friendly town and boost biodiversity for all wildlife.



The Importance of Ponds for Wildlife

Saturday 3rd May 1.30 p.m.

Pete the Pond will be joining us to explain the value of having a pond in your garden. Ponds and waterways are excellent breeding grounds for the insects and invertebrates on which Swifts and other wildlife depend for their food.



Lewes Mosaic Project

Saturday 10th May

11.00 a.m. to 3.00 p.m.

Helen Meade from the Railway Land will explain how their partnership between Lewes Swift Supporters, Lewes Urban Arboretum, Wildflower Lewes, and Common Cause is helping to build a vital connected mosaic of habitats across the town.

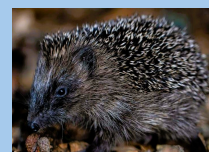


People's Park for Nature

Saturday 17th May

11.00 a.m. to 3.00 p.m.

Dylan Walker will share his vision of a People's Park for Nature that is committed to nature restoration and community engagement.



Hedgehogs!

Saturday 24th May

Talk at 1.30 p.m.

Emily Thrift will show changes we can make to protect Hedgehogs that will also help a wider range of wildlife: “Protecting our Hedgehogs and understanding the impact of plastic”.



Why Bugs Matter?

Saturday 31st May

Talk at 1.30 p.m.

Alice Parfitt from Buglife will explain the importance of working together to conserve all invertebrates: “saving the small things that run the planet”.



Decorate your own mosaic tile to add to our wall collage and share how you are helping to keep Lewes as a Swift-friendly town!



Lewes Climate Hub – putting climate action at the heart of our community!

info@lewesclimatehub.org